

# Get rid of

**BUG BITES**



**SLEEPLESS NIGHTS**



**CONTAMINATED FOOD**



**Use**



# TRANSPORTEX

**FMC**



## HOW HOUSEHOLD PESTS CAN AFFECT YOUR HEALTH

The fact remains – household pests, can have harmful effects upon your health and your family's health. It is important to fully understand the dangers stemming from these types of infestations.



**BEDBUGS**

Bite results in itchiness and rashes leading to sleepless nights



**COCKROACHES**

Cockroach allergens increase the severity of asthma symptoms, carry bacteria such as E. coli and Salmonella and contaminate food, cooking equipment and food surfaces



**MOSQUITOES**

Not only nuisance pest but spread various diseases like malaria and dengue



**ANTS**

Social insects- however they can also be dangerous contaminates to food



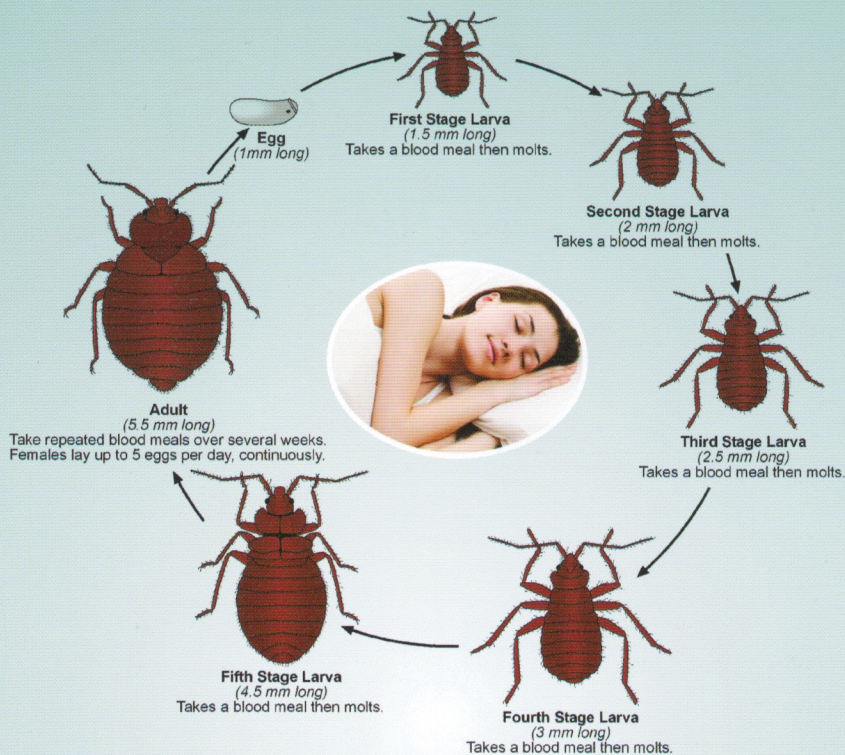
**FLEAS**

Cause itchy, unsightly marks as well as severe allergic reactions

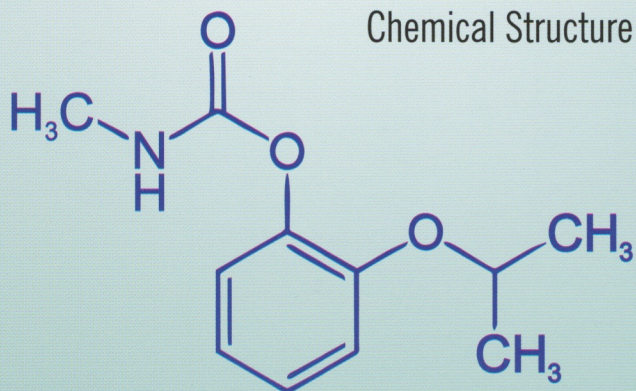


# TRANSPORTEX

## Life Cycle of the Bed Bug



Transportex is a carbamate insecticide containing Propoxur as active ingredient, used to control bedbugs, cockroaches, flies, mosquitoes and ants



Propoxur is an emulsifier concentrate containing Propoxur a.i. 20% w/w balance emulsifier and solvents.



## Recommendation:

| Crop(s)                 | Common Name of Pest  | Dosage          |                         |
|-------------------------|--|-----------------|-------------------------|
|                         |  | Formulations ml | Dilution in Water Liter |
| Common Name of the Pest | Flying Insects, Mosquitoes, Cockroaches, Bedbugs, Fleas, Ticks, Crickets, Woodlice, Mites, Silver Fish, Spider Ants Etc. | 1000            | 40                      |

**Direction of use:** Plant Protection equipments: Commonly used Sprayers for spraying are bucket pump sprayers, stirrup pump sprayer, Knapsack sprayer, Rocking Sprayer, Foot sprayer and power sprayer.

**Precautions:** 1.Keep away from foodstuffs, empty foodstuff containers and animals food. 2.Avoid contact with mouth, eyes and skin. 3.Avoid inhalation the spray mist spray in the direction of wind. 4.Wash thoroughly the contaminated clothes and part of the body after spraying. 5.Do not smoke, drink, eat and chew anything while spraying. 6. Wear full protective clothing while mixing and spraying.

**FMC**

**FMC India Private Limited,**

Embassy Star 8, Palace Road, High Grounds, Bangalore - 560 052



**For more information, Please contact your nearby Dealer**

